

## Health & Wellbeing Paper Appendix

### Percentage overall patient satisfaction from the annual General Practice Patient Survey

#### West Hampshire Clinical Commissioning Group

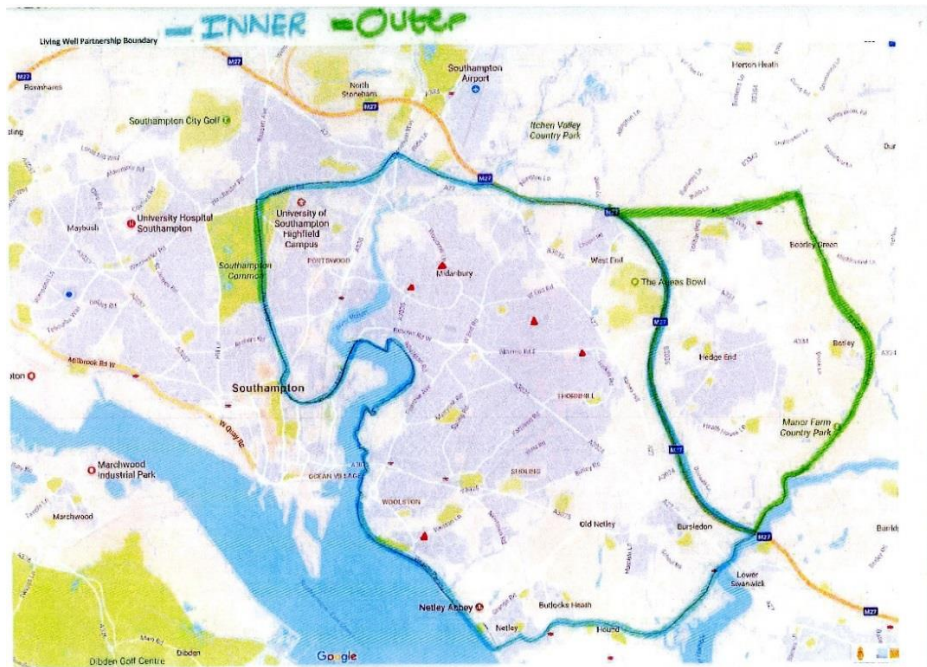
	Mean	2020	2019	2018	2017
Blackthorn	90.8	91	88	93	91
Bursledon	80.5	76	86	78	82
Hedge End Medical Centre	82.0	80	80	84	84
West End	89.0	89	94	83	90
St Luke's & Botley	55.5	58	39	59	66

#### Southampton Primary Care Group

	Mean	2020	2019	2018	2017
Bitterne Health Centre	90.8	91	88	93	91
Peartree Practice	54.8	66	63	42	48
St Peter's	82.0	84	82	85	77
The Old Fire Station	82.5	80	82	77	91
Townhill	77.8	84	79	69	84
Weston Lane	61.8	41	58	69	79
Woolston Lodge	75.5	73	79	77	73

# Health & Wellbeing Paper Appendix

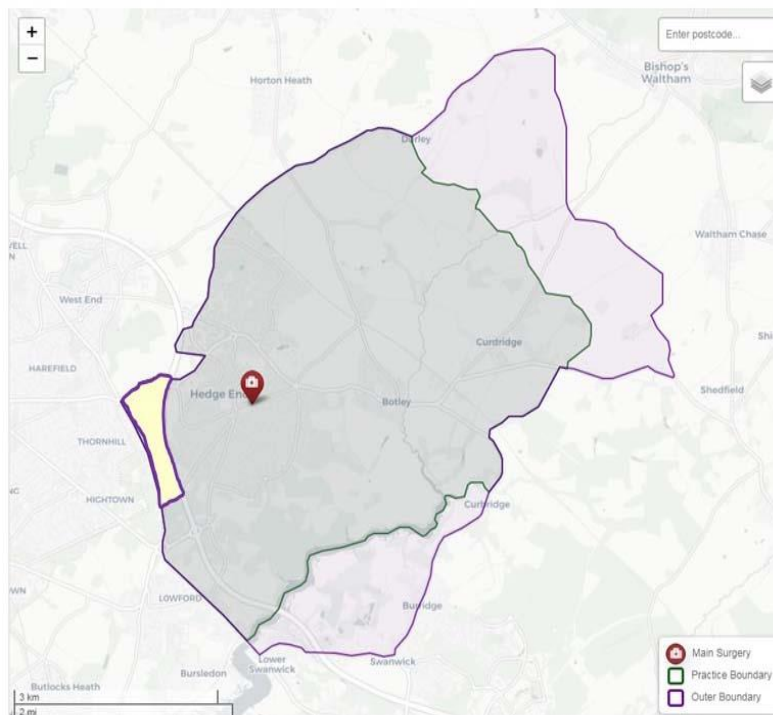
## St Luke's & Botley Surgeries catchment area



## Hedge End Medical Centre catchment area

### Hedge End Medical Centre boundary map

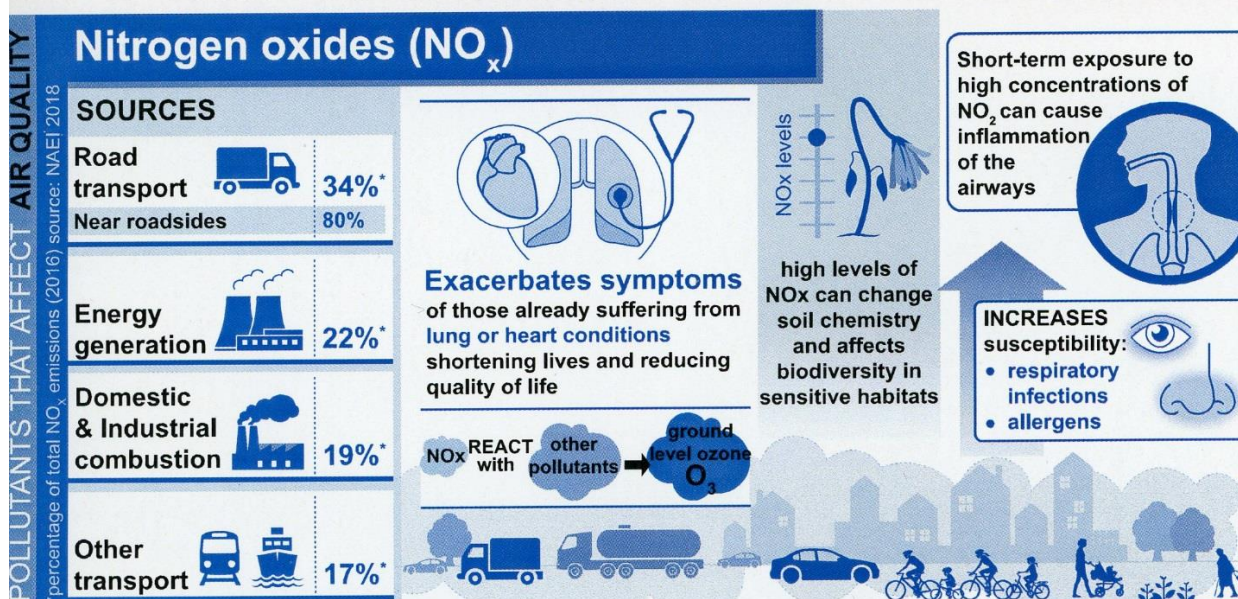
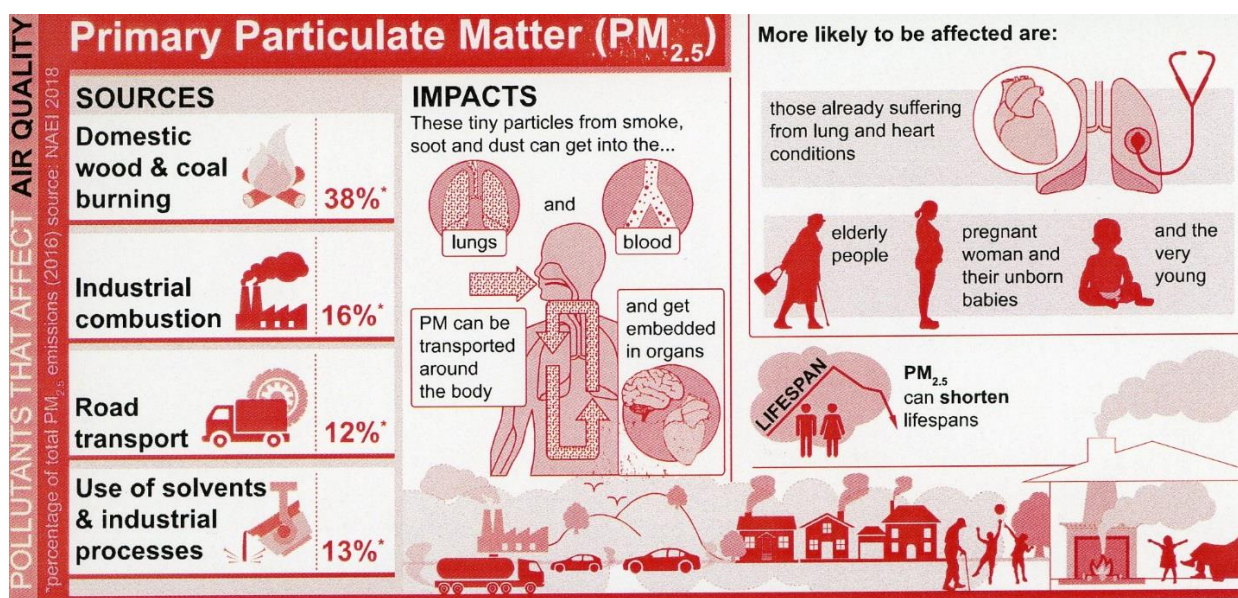
Section in Yellow shows a recent agreed boundary reduction, Hedge End Medical Centre no longer cover this area.



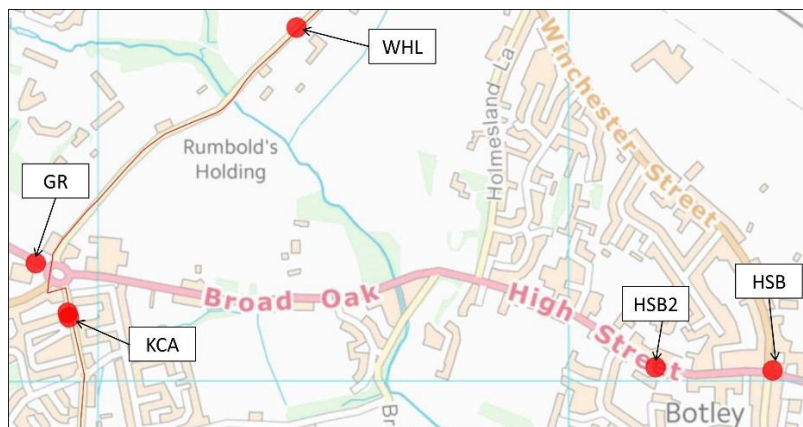
Air pollutants with ambient air quality standards in the UK

Nitrogen dioxide (NO <sub>2</sub> )	NO <sub>x</sub> (vegetation)
Particulate Matter (PM <sub>10</sub> )	Fine Particulate Matter (PM <sub>2.5</sub> )
Ozone (O <sub>3</sub> )	Benzo[a]pyrene (B[a]P)
Sulphur dioxide (SO <sub>2</sub> )	Nickel (Ni)
Benzene	Cadmium (Cd)
Lead (Pb)	Arsenic (As)
Carbon Monoxide (CO)	1,3-butadiene

Air pollutants (PM<sub>2.5</sub> and NO<sub>2</sub>), sources and impacts



Location of NO<sub>2</sub> diffusion tubes in Botley



Adjusted NO<sub>2</sub> levels in µg/M<sup>3</sup> air

	High Street Botley			High Street Botley - site 2(A)		
	Annual mean	Months >40 µg/M <sup>3</sup>	Highest month	Annual mean	Months >40 µg/M <sup>3</sup>	Highest month
2020	30.74 <sup>1</sup>	0	37.35 <sup>1</sup>	27.71 <sup>1</sup>	0	39.83 <sup>1</sup>
2019	31.15	1	40.32	28.47	0	40.25
2018	32.17	1	40.72	29.67	0	34.27
2017	35.17	2	44.00	31.33	1	48.63
2016	38.26	4	43.39	31.54	1	41.73
2015	31.51	0	38.00	27.74	0	37.66
2014	40.39 <sup>2</sup>	3 <sup>3</sup>	66.82 <sup>2</sup>	33.55	1	41.05
2013	38.04	4	46.64	35.95	3	48.01
2012	39.86	6	54.50	36.48	5	48.31

<sup>1</sup> = result adjusted by mean adjustment from 2012-2019

<sup>2</sup> = data from EBC results with an obvious incorrect result for November 2014 result was 72.63 µg/M<sup>3</sup> (adjusted 66.82 µg/M<sup>3</sup>) when HSB2 result was 44.62 µg/M<sup>3</sup> (adjusted 41.05 µg/M<sup>3</sup>), most appropriate calculated correction for November result would be 49.42 µg/M<sup>3</sup> (adjusted 45.47 µg/M<sup>3</sup>), then annual mean would be 41.97 µg/M<sup>3</sup> (adjusted 38.61 µg/M<sup>3</sup>) and so below the annual maximum permitted level

<sup>3</sup> = with the correction used above there are still 3 months above 40 µg/M<sup>3</sup>

Health & Wellbeing Paper Appendix

Adjusted NO<sub>2</sub> levels in µg/M<sup>3</sup> air

	High Street Botley - site 2(B)			Kings Copse Avenue		
	Annual mean	Months >40 µg/M <sup>3</sup>	Highest month	Annual mean	Months >40 µg/M <sup>3</sup>	Highest month
2020	-	-	-	27.74 <sup>1</sup>	0	36.03 <sup>1</sup>
2019	-	-	-	28.11	1	40.18
2018	28.82 <sup>2</sup>	0	31.30	27.85 <sup>3</sup>	0	34.85
2017	30.54	1	47.28	30.91	1	43.66
2016	33.14	1	49.11	32.94	0	39.96
2015	-	-	-	20.61 <sup>4</sup>	0	20.61

<sup>1</sup> = result adjusted by mean adjustment from 2012-2019

<sup>2</sup> = HSB2(B) monitoring discontinued after August result

<sup>3</sup> = KCA monitoring site moved a short distance to KCA(18) monitoring site in May

<sup>4</sup> = KCA monitoring commenced in December

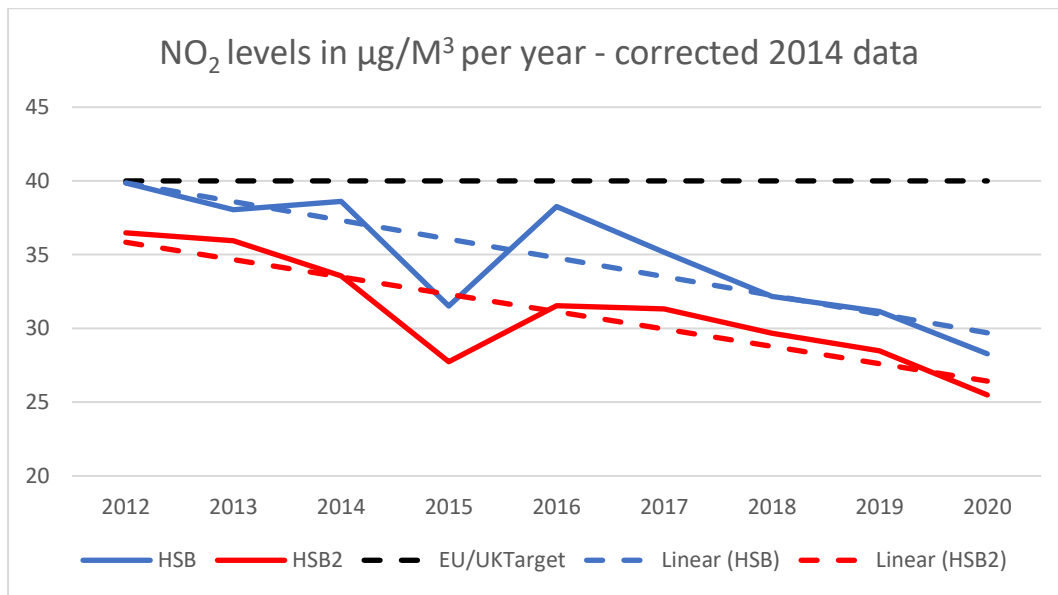
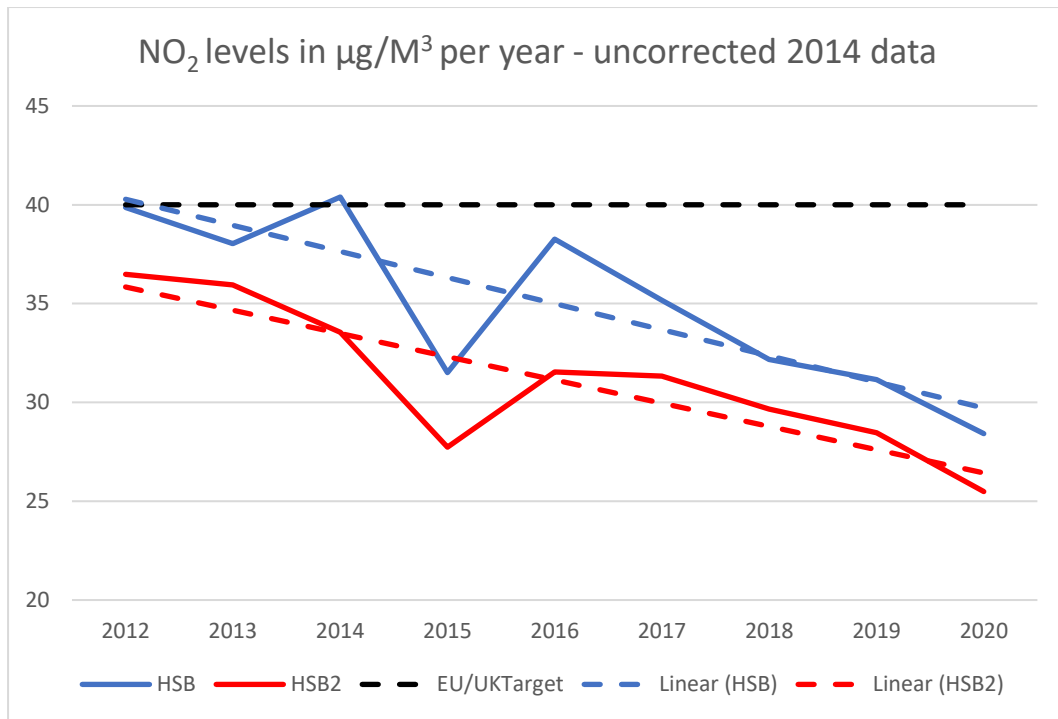
	Woodhouse Lane			Grange Road		
	Annual mean	Months >40 µg/M <sup>3</sup>	Highest month	Annual mean	Months >40 µg/M <sup>3</sup>	Highest month
2020	19.23 <sup>1</sup>	0	26.50 <sup>1</sup>	26.90 <sup>1</sup>	0	35.92 <sup>1</sup>
2019	17.54	0	27.41	26.60	0	38.30
2018	20.30	0	26.54	28.70	0	38.24
2017	19.08 <sup>2</sup>	0	23.07	31.26	1	43.71
2016	-	-	-	30.16	0	35.42
2015	-	-	-	21.10 <sup>3</sup>	0	21.10

<sup>1</sup> = result adjusted by mean adjustment from 2012-2019

<sup>2</sup> = WHL monitoring commenced in July

<sup>3</sup> = GR monitoring commenced in December

Annual mean NO<sub>2</sub> concentrations in High Street Botley



## Health & Wellbeing Paper Appendix

### Southampton Road Eastleigh PM<sub>10</sub> results

	Annual mean PM <sub>10</sub> in µg/M <sup>3</sup> air	24-hour mean over 50 µg/M <sup>3</sup> air
2020	22	0
2019	24	3
2018	26	5
2017	24	9
2016	25	8

UK maximum annual permitted level of PM<sub>10</sub> is 40 µg/M<sup>3</sup> air

UK daily level of PM<sub>10</sub> must not exceed 50 µg/M<sup>3</sup> air for more than 35 days per year

Variance between 2015 reference and 2020 modelled pollutant levels in AQMA4 (High Street Botley)

Mean level		NO <sub>2</sub>	PM <sub>10</sub>	PM <sub>2.5</sub>
Annual	After Bypass	-35.9%	-22.3%	-24.3%
	Without Bypass	-18.5%	-4.9%	-7.7%
Hourly	After Bypass	-40.1%		
	Without Bypass	-19.4%		
Daily	After Bypass		-31.8%	
	Without Bypass		-5.5%	

## Health & Wellbeing Paper Appendix

Groups providing support to reduce isolation, provide physical activity, mental stimulation and educational input for a variety of age groups

<b>Within Botley Parish</b>	<b>Frequency</b>	<b>Within Botley Parish</b>	<b>Frequency</b>
All Saints Café Chat	Week	Friends of Little Hatts	Month
All Saints Church Choir	2x week	Friends of Pudbrook	Month
All Saints Coffee morning	Month	Health Walks	Week
Backbeat Dance	Week	Insanity Fitness	Week
BCD Stitches	Month	Jitterbugs	Week
Bell Ringers	Week	Jive & Swing Dance Classes	Week
Botley Allotment Association		Music Bugs (Children)	Week
Botley Badminton Club	Week	Moo Music for Babies	Week
Botley Bridge Club	Week	Out for Lunch Club	Fortnight
Botley Choral Society	Week	Probus Hamble Valley	Fortnight
Botley Floral Club	Month	Probus Zero 4	Month
Botley Gardening Club	Month	Rainbows, Brownies & Guides	Week
Botley History Society	Month	Recycle & Sew	Week
Botley Junior Choir	2x week	Run Together	Daily
Botley Neighbourcare Outings	Fortnight	Spinners Dance Studio	4x week
Botley Short Mat Bowls Club	3x week	Stretch with Sandra	Week
Botley Village Football Club		Tumbletots	Week
Botley Youth Football Club	Week	Upper Hamble Canoe Club	
Botley Youth Soccer School	Week	Yogabellies	Week
Botley Walking Football	2x week	Yoga EC	Week
Botley Women's Institute	Month	Yoga Hatha	Week
Bumps & Babes		Yoga LG	Week
Butterflies Bereavement	Week	Yoga Mind, Body & Movement	Week
Class Act Theatre School	Week	Yoga Stacey Steele	Week
Enjoy Share Art	Week	Yoga, Tai-chi & Pilates	
Flutterbies Parents & Toddlers	Week	Yoga Viniyoga	Week
Forrestall Irish Dancing	Week	Zumba Fit	Week
Friday Night Youth Football	Week		



## Health & Wellbeing Paper Appendix

Groups providing support to reduce isolation, provide physical activity, mental stimulation and educational input for a variety of age groups

<b>Just outside Botley Parish</b>	Frequency	<b>Just outside Botley Parish</b>	Frequency
Bishops Waltham Rotary Club	Month	Hedge End Breakfast Rotary	Week
Buridge Cricket Club		Hedge End Junior Cricket Club	
Community Hub Youth Centre	3x week	Hedge End Running Club	
Curdrige Amateur Drama		Inner Wheel	Fortnight
Curdrige Lunch Club	Fortnight	Pinkmead Riding School	
Eastleigh Men's Shed	2x week	Scouts	
Fair Oak Cricket Club		Singsational Voices	Week
Halo Lunch Club	Fortnight	Southampton Quilters	Fortnight
Hamble Valley Rotary Club	Fortnight	Tretots Nature for Children	2x week
Hamble Valley U3A	Month	Wildern Community Choir	Week

Groups providing physical help

<b>Within Botley Parish</b>	<b>Outside Botley Parish</b>
Botley Neighbourcare	Eastleigh Basics Bank
Botley Mini Bus	Hedge End Food Centre
Botley & Curdrige Welfare Trust	Meon Valley Food Bank
Gems Dementia Friendship Group	
Street Pastors	