

BOTLEY NEWS

Botley Parish Council invites residents, family
and friends of Botley to celebrate

The King's Coronation

PARTY in the PARK

Saturday 3rd June 2023
at the High Street Recreation Ground, Botley

The party starts at 1pm and finishes at 10pm

Entertainment on the stage all day:

The Jays (Headline Act) • Warsash Concert Band • Davey Jones Locker • Montage
Public Zumba and Dance Demonstrations from local groups

Dedicated Food Court area:

Fish & Chips • Burgers • Waffles and crepes
Marucci ice cream vans • Hog Roast • Purbani
Jacket potatoes • Coffee and cakes • Afternoon tea boxes

Botley's pubs and breweries in the **Beer Tent**

Range of sustainability vendors:

BEAMZ Bikes • Hampshire & IOW wildlife trust • Body shop
Louise with Bees • Gaskins • Heat Pump advisors

Dog show, Magician, Popells Mobile Farm, Bouncy castle,
Face painting, Pop-up charity shop, Local crafts,
PTA run children's activity area, Jewellery, Raffle,
Vintage fire engines and classic cars.

Free minibus to and from Boorley Green during the afternoon and evening.

Please walk or cycle to the High Street Rec.
Disabled Parking only at the Botley Centre.

With thanks to our event sponsors:



What's On and Where?

Boorley Green Community Buildings

Backbeat Dance

Wednesday

4:30—5:15pm

Junior Street Dance

5:30—6:00pm

Adult HIIT

Buddy's Friends Dog Training

Friday 6:00-8:00pm

Churches Together

3:00-5:00pm—Every 2nd Sunday

First Touch Football

Friday—18 months to 4 1/2 years

9:30—10:15am

10:30—11:15am

Fitsteps with Janine

Tuesday— 1:00-1:45pm

Gymtots—Pre-school gymnastics

Monday and Thursday sessions

9:30am—under 2 years

10:20am —2 years

11:20am —3 to 4 years

Gymtots—After school sessions

Thursday

4:00pm—4 to 5 years

4:45pm—6 to 7 years

Hedge End Bobbin Lace Makers

Tuesday 9:30-11:45am

Matt Fiddes Martial Arts

Saturday

9:00am—3 to 6 years Mighty Mats

9:45am—7 years & over Junior Martial Arts

MusicBugs

Wednesday

9:50am —MiniBugs 6 months—2 yrs

10:40am—FamilyBugs 0-5 yrs

11:30am—BabyBugs newborn to walking

Slimming World

Tuesday 5:30 & 7:00pm

Solfit

Monday—6:45-7:30pm *Kettlebells*

Wednesday—6:45-7:30pm *HIIT*

Thursday—6:50-7:35pm *Circuits*

Tae-Kwon-Do

Tuesday and Thursday sessions

6:30-7:30pm Family class (from 8 years), all grades

7:30-8:30pm 16's and over, any grade, under 16's—blue belt and over

The TotalCare Clinic

Friday

10:00am—Intermediate Tai Chi

11:00am— Beginners Tai Chi

Yoga with Rachel

Wednesday—7:10-8.20pm

Active Yoga for All

Friday— 12.15-13:15pm

Active Yoga for All

Zumba

Monday 7:00—8:00pm

Class schedules and locations are posted in each building, so please check these out for more details or contact the office on 01489 787181.

Botley Centre

Over 65's Walking Football

Monday & Wednesday

10:30am-12:00pm

Alphabets Pre-School

Monday-Friday 9:00am-3:00pm

Apple Tree Anti-natal Yoga

Wednesday 7:30pm-8:30pm

Botley Floral Club

1:00pm-4:00pm Every 2nd

Wednesday (not Jul, Aug)

Botley Short Mat Bowls Club

Tuesday 2:00-4:00pm

Thursday 9:30-12:00pm

Friday 7:00-9:45pm

Friday Night Football

6:00pm-7:00pm—10-12 years

7:00pm-8:00pm—13-14 years

Hedge End Bobbin Lace Makers

Thursday 7:00pm-9:30pm

Kickboxing

Saturday 10:00-11:00am

Moo Music

Monday

9:30am-10:15am

10:30am-11:15am

Probus Club of Hamble Valley

10:00-12:00pm— Every 1st & 3rd

Wednesday (not Dec, Jul, Aug)

Slimming World

Tuesday 9:30am-11.00am

Spinners Dance

Monday, Tuesday, Wednesday &

Thursday 5:00pm-9:00pm

Stacey Steele Yoga

Wednesday 9:30am-10:30am—Adults

Sweaty Mama

Wednesday 11:15-12:00pm

Weight Watchers

Friday 9:00am—10:00am

Why Walking Football?

Paul is an active member of our Monday and Wednesday morning Walking Football team and has summed up how important playing is to him:

"I've just turned 70 and have been playing since 2015. As well as improved fitness and helping to keep my weight under control, I've discovered a host of other benefits I hadn't anticipated!"

- Improved muscle strength and better sleep
- New friends across the different teams as we play at different locations
- Coffee/drinks afterwards
- A monthly breakfast club
- And most importantly, helping to provide contact/social interaction for retirees outside of home, replacing the lost workplace interactions.

Wow! If you'd like to join the team, please contact the office on 01489 787181 for information!



The Coronation of Their Majesties King Charles III and Queen Camilla

An historic moment, a time to reflect, celebrate and look forward.

GOD SAVE THE KING

EVENT DAY

It is well known that the King is keenly interested in sustainability and the safeguarding of the environment so a key theme of the "Coronation Party in the Park" is 'sustainability'. Stands and exhibits will feature products, ideas and information supporting a sustainability theme.

Starting with a slogan of "no waste to landfill", all visitors will be encouraged to separate packaging, food and drink containers into segregated bins featuring different types of recycling. Botley Co-op will be collecting soft plastic waste, much of which is unsuitable for domestic collection schemes.

On a lighter note, a magician, animal farm and childrens' rides and games will entertain younger visitors. Plus the chance to graffiti an old banger! A visit by vintage cars and 24 vintage fire engines

is expected to draw plenty of interest.

A Dog Show organised by The Raw Pet Food Pantry features dog training demonstrations and a "Fun Dog Show"; visitors can enter on the day. The event stage is hosting live music by local bands, dance and entertainment from 2pm to the close at 10:30pm.

Vendors and information stands feature an eclectic mix of wooden bicycles, electric cars, electric lawnmowers, dog bandanas, bee keeping, candles, jewellery and more

Food and drink vendors are equally varied, from fish and chips to afternoon tea. Local pubs and micro breweries will offer non stop refreshment.

*Finally, to continue the sustainability theme please consider how to travel to the event.
NO EVENT PARKING has been arranged.*

EVENT PLANNING

After the success of last year's Platinum Jubilee event on 04 June 2022 the Parish Council started planning for another event this year for the same weekend, little knowing the events of national importance which lay ahead. This year's event will celebrate the Coronation of King Charles III.

The Parish Council allocated a budget of £15,000 for the event which has also been generously supported by sponsorship from local businesses.

- £2,500 Botley Mills Country Store and TGS Outdoors.
- £1,000 Silverlake Automotive Recycling
- £750 White & Company
- £1,748 County Councillor Grant by Cllr Rupert Kyrle.

The Council would like to thank all these organisations for their generous support.

Why hold the event in June and not the first weekend in May?

After last year's event Cllr Chris Cooper reached out to a number of our suppliers to deliver another 'Party in the Park' this year. By the time the Coronation date was announced event preparation was already underway. Bonus reasons for an early June event were seen to be lighter evenings, better weather and reduced competition for supplier services.

We sincerely hope this will be a day to remember, a day of fun, celebration and good memories.

The King's Coronation
PARTY in the PARK

Community Minibus

Will run every half hour
from 1:30pm to 10:30pm

The stops will be:

- Kingsman Drive @ 1:30pm, 2pm, 2:30pm onwards
- Wallace Avenue (bus stop by the park) @ 1:35pm, 2:05pm, 2:45pm onwards
- Oatlands Road @ 1:40pm, 2:10pm, 2:50pm onwards

The minibus will be driven by volunteers and there are only 13 seats.
Please note, we will prioritise disabled and elderly members of our community first.

Botley Parish Council

Botley to Swanmore College A good result!!

Following the withdrawal of the Xelabus X9 service on 31st March local children attending Swanmore College were unsure how they were going to get to school after Easter. Whilst the idea of not making it to school might have suited some youngsters, it wasn't welcomed by Cllr Chris Cooper! The Hampshire School Transport

Team secured a schools only X9A service for Botley children going to Swanmore College. HCC are funding a new Stagecoach bus service. The 49 service replaces the X9/X10 Xelabus routes. It includes one daily round trip for children attending Swanmore College who are eligible for school transport.

The new 49 service is better than no service but the timings don't

connect with onward routes.

Cllr Cooper and HCC Cllr Rupert Kyrle asked HCC to review the timings to interchange with trains at Botley and the Bluestar services from Hedge End / Botley to Southampton & Eastleigh.

HCC has subsequently confirmed that minor timetable changes will be implemented in September to improve connectivity with other transport services.



Alphabets Pre-School, Botley

Alphabets is a well established pre-school on the High Street Recreation Ground in Botley with a 'Good' rating from Ofsted.

We have spaces for the Autumn term 2023 for children age 2-4 years old.

Opening hours:

Monday, Tuesday and Friday 8.30am - 3pm
Wednesday and Thursday 9am - 3pm

Funding is available for 2, 3 & 4 year olds.

Contact us for more information
or to arrange a visit call 07867542988

or email contact@alphabets.org.uk

Visit our website - www.alphabets.org.uk



Botley & Curdrige Welfare Trust

The Welfare Trust is a local charity which can be a safety net for people who may be in need and live within the Parishes of Botley and Curdrige.

All requests are dealt with in strict confidence. If you are in need of help or know someone who is in need, please contact Vanessa Bord on 01489 786245.

Botley Centre Weekend Caretaker/Cleaner

10hrs per week

Saturday & Sunday, + 1 weekday evening

For more information, call 01489 787181

or email: parish.clerk@botley-pc.gov.uk

Rotary



Hamble Valley

Hello everyone,
We thought you might like an up-date of our activities. First, we are pleased to inform you that our traditional Carol Float and static collections at Tesco Bursledon raised £3000 for local causes, so thank you so much for your generosity!

Our annual quiz with a fish and chips supper took place in March in Wyvern School, Fair Oak. It was sold out and we raised £1600 for Rotary charities. This is a fun evening and the next one is already planned for 22nd March 2024!

On the international front, we spent £2400 on 4 emergency boxes to be sent to Turkey after the devastating earthquake in February. These were specially adapted to the circumstances by the charity Shelterbox, which is very experienced in disaster relief.

In January and February, we supported 2 volunteers delivering aid to Ukraine with a vehicle full of medical supplies donated by local hospitals, GP surgeries and Everett Pharmacy in Hedge End.

Our next fund-raising event will take place at Fairthorne Manor, near Botley in aid of humanitarian aid to Ukraine and it will be a musical evening: a Swing Supper with professional musicians

(saxophone and trombone) and Wyvern College Big Band. Watch out for posters with QR codes to reserve your tickets! Last year's jazz band event was a great success!

We are also very keen on environmental projects and we have now planted the 4 promised semi-mature trees in the new Reflections and Connections woodland near Manor Farm (Hamble Valley Country Park) in conjunction with Hampshire County Council.



We are donating a large bag of bee friendly wild flower seeds for planting by Botley Parish and we continue to support Botley School garden; educational boards are being ordered. We are also in touch with Fair Oak and Horton Heath Parish Council to help with the re-development of a communal orchard as part of their Greening Campaign.

Our Annual Open Garden weekend in collaboration with National Garden Scheme will take place on 13th & 14th May at Manor Lodge, Brook Lane, Botley with a traditional tea and cakes stall.

For up-to-date information, do not hesitate to consult our website and our Facebook page. Don't forget that you would be very welcome as new members. If you are thinking about joining a worldwide service organization just consult Hamble Valley Rotary Club website for information:
www.hamblevalleyrotary.co.uk

THE BOTLEY NEIGHBOURHOOD PLAN – AN UPDATE

INTRODUCTION:

Once the Botley Neighbourhood Plan (BNP) has passed examination and has been to referendum, it becomes a legal document and forms part of the Eastleigh Borough Council's Local Plan for specific planning matters within the Parish.

If passed at examination, any future development in Botley will be covered by all the policies within the Local Plan.

In the August 2022 edition of the Botley News we outlined the whole vision of the plan with an explanation of the processes required for our Neighbourhood Plan to be successful.

The BNP has just completed Regulation 14 which required a 6-week consultation with both the community and a wide range of key stakeholders and statutory consultees. This was carried out during the last quarter of 2022. Details relating to this consultation are still available and can be viewed at <https://www.botley.com/np-information>

Prior to commencement of Regulation 14 consultation, all households within the Parish should have received a copy of the '**Botley Neighbourhood Plan Executive Summary**' leaflet providing a summary of the plan, as well as the following information:

- *outlining the reasoning behind the plan*

- *the objectives of the plan*
- *the policies*
- *where the plan could be viewed*
- *how to make comments on the plan.*

The Executive Summary pamphlet also included a 'BNP Consultation Feedback Form' enabling the Parish Council to consult with residents giving them the opportunity to express their own assessment of the plan. Many residents sent in their comments the majority of which supported the BNP whilst others offered helpful suggestions for minor modifications to wording. Where possible and appropriate these amendments have been included.

At the March 2023 meeting, Botley Parish Council formally approved the BNP Submission Document. This will be submitted to Eastleigh Borough Council when all supporting documentation has been completed around mid-April. This will be Regulation 15 and it will be down to Eastleigh Borough Council to appoint an independent Examiner to examine the Plan. EBC will also undertake its own consultation on the Botley Neighbourhood Plan (Regulation 16) which will be exactly the same as our own Regulation 14, however in this case, all comments will go directly to the Examiner. When the Examiner has examined the Plan, and given their comments, their recommended

amendments are made to the Plan, following which a Referendum will be held throughout the Parish. If the Neighbourhood Plan is agreed by a simple majority of those who vote, then the Plan will be "made" by Eastleigh Borough Council.

Once 'made' it is a powerful tool for shaping development which takes place within the Parish of Botley and covers a wide range of issues from protecting local green spaces, shaping where development can take place, economic policies, traffic policies and a policy proposing local gaps to help prevent overdevelopment and ensure we can retain rural gaps between settlements.

Throughout this final process, the Parish Council's task will be to advertise throughout the community advising that this important Referendum is in progress.

The Parish Council and the members of the Botley Neighbourhood Plan committee would like to thank all those residents who provided a comment or response on the Neighbourhood Plan.

PLEASE REMEMBER TO VOTE

Thank you.
Cllr Stephen Wildin,
Chairman, Botley Neighbourhood Plan Committee
Cllr Dr. Colin Mercer,
Chairman, Botley Parish Council

Quiz Night

When? Friday 12 May at 7.30pm
Where? All Saints' Church

All Saints' Church Roof Repair and Refurbishment Fund

Dates for your diary

Contact All Saints Church for more details

Pimms and Posh Frocks

When? Saturday 15 July at 7.00pm
Where? Portland House

A chance to dress up and bring a group of friends for an evening of wine, food and good company!



Kickboxing Classes for All

Saturday Mornings - 10am - 11am at The Botley Centre
Cost £6 (Adults & Juniors)

What you get from our kickboxing classes?

Kickboxing is a dynamic & effective sport that can be enjoyed by all, whatever your age, or fitness level.

Our structured & fun classes are designed to teach you the sport itself, to improve fitness levels, lose weight, gain confidence, increase flexibility and stamina and learn self-discipline. Classes include students of all ages, be they beginners or black belts, with a mix of males & females ranging from 7 yrs to 60 yrs.

For more information, contact David Adams on **07768 647328**, email david.adams@sksbusinessservices.com or on Facebook at **David 'Grizzley' Adams or Southern Knights Kickboxing School**

Instructors - 4th Dan Black Belt Sempai David Adams & 3rd Dan Black Belt Sempai Paul Flack



We are a friendly and welcoming u3a. Our membership is varied, some are retired, others semi-retired.

Members meetings with a guest speaker are held on the second Wednesday of each month in Botley Market Hall from 1.30pm, lasting about an hour and a half - plenty of time for a cup of tea or coffee and a chat. We have a varied programme of sub-groups, including walking, pub lunches, board games, creative writing and outings. Whatever free time you have, we hope to have an activity for you.

If you enjoy the company of others, wish to learn something new or wish to share your own interests and skills with others, then come and join us!

Full details can be found on our website <https://u3asites.org.uk/botley-hedge-end> or email us at: bhedistrict.u3a@gmail.com.

Botley in Bloom - Summer Gardening Competition July 2023

Whatever the weather, Botley in Bloom continues to hold an Annual Summer Gardening Competition. All categories are open to private premises within Botley.

**Front Gardens, Back Gardens,
Cottage Gardens,
Courtyard Gardens,
Environmental Gardens,
Baskets / Containers,
Vegetable Gardens, Allotments**

TO ENTER THIS YEAR

Entries open on 1st June and close on 3rd July.

Last year's entrants automatically receive an Entry form.

New entrants can collect and return Entry Forms at Lallys Pharmacy in the Square.

Alternatively, contact us by emailing botleybloom@yahoo.com for an electronic Entry Form.

Judging Week starts on 10th July.

In October, we hold our Presentation Evening. Winners receive a perpetual shield, plus the much coveted hand-made pottery plaques, by Sandi Dixon of Southampton.

Happy gardening

Botley in Bloom



THE BOTLEY BYPASS

THE MOST RECENT DEVELOPMENTS

Introduction :

Project Overview:

The route of the new 'Botley Bypass' spans the Uplands Farm Development and the development's construction and the improvements to Woodhouse Lane South will deliver the first two phases of the Bypass.

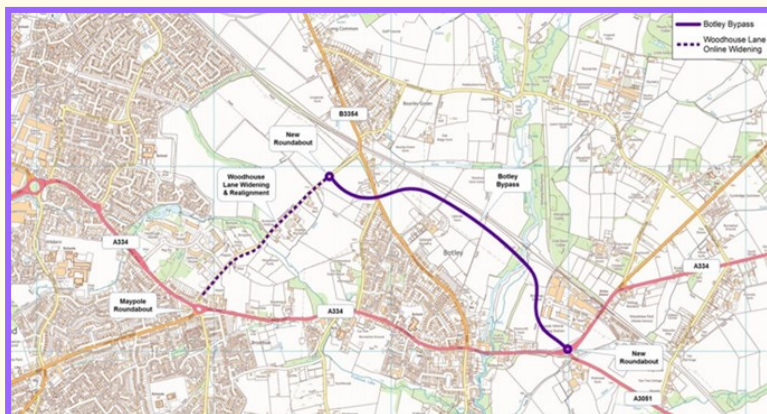
New roads, footways and utility services are also being constructed and installed within the Woodhouse Lane site, to allow access from Woodhouse Lane and to provide the required power, water, and waste facilities necessary to service the new Woodhouse Park development. Highway improvements include the widening of Woodhouse Lane a new roundabout junction and the construction of a new link road between Woodhouse Lane and Winchester Street.

The Hampshire County Council scheme web pages are kept updated as to the progress of the works:

<https://www.hants.gov.uk/transport/transport schemes/botleybypass>

When complete, the bypass will reduce congestion, noise, and pollution through Botley village and provide the necessary capacity to cope with additional traffic from nearby new developments.

Phase's 1&2 are expected to be completed in Spring 2023 with Phases 3&4 completed by 2026.



Following Completion

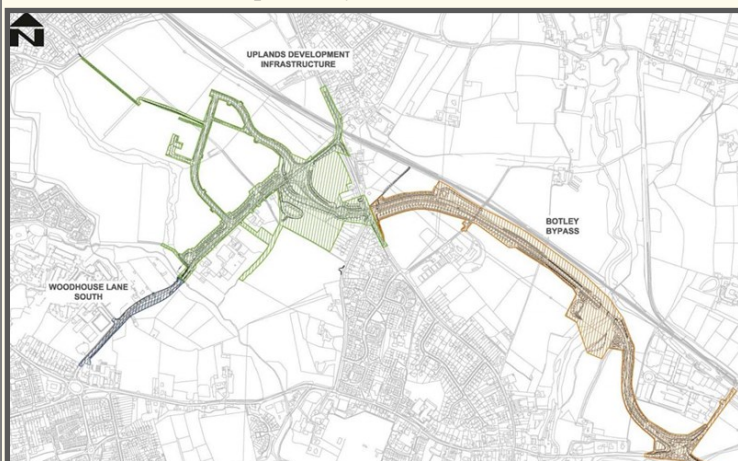
1. It is also envisaged that the road down to Botley Mill will become single car passing. (alternative passing) (priority vehicles from other direction)
2. With wider pavements and a new dedicated cycleway also in the plan going from Botley Square up to the new 'Pinkmead' roundabout, using a developer contribution.
3. We are requesting HCC to make the road subject to a 'weight' limit needed to ensure that the Bypass does not increase traffic, particularly HGV's, through to Boorley Green.
4. Winchester Street becomes 'closed' so it is not subjected to significant traffic as now.
5. Request for a lower speed limit and HGV weight limit through Botley Square will be requested by the Parish Council to Hampshire County Council
6. After completion there are funds available to provide a 'cycle way' from the 'Pinkmead' roundabout the first phase of which to the new Whitely Meadows settlement has been completed.

In conclusion:

This up-to-date review has been written to provide Botley residents with the latest information available for the Botley Bypass. For further information please contact the following Councillors:

Councillor Stephen Wildin
email: stephen.wildin@botley-pc.gov.uk

Councillor Dr. Colin Mercer
email: colin.mercer@botley-pc.gov.uk



BOTLEY, CURDRIDGE AND DURLEY HISTORY SOCIETY

Springtime 100 years ago. What were people in Botley reading about in their local papers? I have been in our archives looking at Vi Cooke's collection of newspaper cuttings from Spring 1912 to Spring 1914.

April 1912 saw a big shock for many people, especially those connected to the sea (and there were quite a few retired sailors, and families, in this area in those days). On 15th April RMS Titanic went down, taking over 1500 lives. Nothing like that had been known of before. The Mayor of Southampton's Titanic Relief Fund (for the families) was set up within days, and Botley was quick to respond. Miss Augusta Burrell (a wealthy family) from Fairthorne Grange sent £100 to the fund. Mr Connor of the Railway Hotel in Botley had collected £10 (a good sum in those days) to send by 27th April. Many local churches and organisations spent the late Spring of 1912 holding collections and concerts to raise funds to help.

By May 1912 Botley traders, and shoppers, were adapting to the new Shops Act (into force on 1st May). This brought in a weekly half day holiday for shop staff – which became "early closing day". The WH Smith and Sons bookstall at Botley Station announced it would close early on Thursdays, with the village shops and Post Office following suit.

Spring was the time many local strawberry growers were starting to prepare for, what they hoped would be, a good crop. It usually was. Botley Station transported huge amounts of the berries to market over the summer. On 16th May 1914 it was reported that the first (and early) consignment of strawberries to leave Botley Station had been

innovatively grown under "glass shade." Unfortunately, on 30th May 1914 a late and severe frost, with ice, was reported – cutting down many potato and runner bean plants that locals used for an income (and their dinners).

With such an interest in growing produce, the Botley and Curdridge Horticultural Society seems to have been thriving. Each Spring they planned their annual Summer Shows, usually held in a field on Botley Hill. The 1913 committee meeting of March 1913 was planning prizes for 26 classes, and the Vicar of Curdridge, Rev Hills, offered a special prize for "table decorations by parlourmaids". The larger houses in the area often employed enough servants to warrant having parlourmaids. How times have changed!

Darts matches also seem to have been a keen point of interest. In March 1913 weekly matches between the Brewery Tap, Botley (Winchester Street) and The Cricketers, Curdridge resulted in resounding wins for Curdridge every time. One of the matches ended with displays of step and clog dancing to Mr Keale's Band. Hopefully it cheered up the Botley team! They did do better at cricket once the season had started.

Going to church was more common. In February 1913, thirty people from Hedge End, Botley and Bursledon were confirmed by the Bishop of Southampton in St Johns Church, Hedge End. Botley was still part of the Diocese of Winchester, not joining the new Portsmouth Diocese until 1927.

Temperance Society meetings (more active in Victorian times) were still held locally to campaign against alcohol,

although only "moderate attendance" was reported.

The popularity of "Smoking Concerts" locally was often reported on. This was code for "men only" as women did not smoke in public (or at all) in those days. Their audiences enjoyed songs, gramophone records, and speakers on current topics. One such Conservative Association "smoking concert" had the theme of the recent National Insurance Act 1911 – which gave very limited and means tested health insurance, sick pay and unemployment benefit to certain workers but not their families. It was a big change for those Botley workers who came under the scheme.

BOTLEY, CURDRIDGE AND DURLEY HISTORY SOCIETY

Meetings of the Botley, Curdridge and Durley History Society, with a talk, will be held on the following Fridays in 2023 at 7pm in Botley Centre.

28th April 2023 "The Origins of Bishops Waltham" with Tony Kippenburger

22nd September 2023 "History minus the boring bits" with Susan Howes

27th October 2023 "Netley Chapel and Hospital" with Ursula Pearce

24th November 2023 "The Miracle Flower from Flanders to The Tower" with Lt Col Ret'd Jeremy Prescott

15th December 2023 — Christmas Social

**We offer an annual membership - or -
you can come for £3 per meeting**

Sue Perry, Secretary

Botley Floral Club

We are a friendly group of ladies who meet the second Wednesday in the month at the Botley Centre at 1.15pm.

We experiment with arranging flowers and greenery in various containers whether we are novices or more experienced. We just have fun!

Professional demonstrators visit, showing us amazing ways of displaying floral arrangements or speakers advise and teach.

The club has a warm welcome for new members. Join us for fun and friendship!

**Contact Christine Clemons on:
01489 790522.**



Do you have a few hours spare that could be used to volunteer for Botley Parish Council?

We are extremely grateful to our band of volunteers and we can always welcome more!

Newsletter Deliveries — Christmas In The Square — Friends of Pudbrook and more!

Please Telephone 01489 787181
or email:
deputyclerk@botley-pc.gov.uk to find out more.





The King's Coronation
PARTY in the PARK

**EVENT
RAFFLE**

Top Prizes

£150 - donated by event sponsors Botley Mills Country Store and TGS Outdoors.
£100 - donated by event sponsors Silverlake Automotive Recycling
£50 - donated by event sponsors White & Company

Other Prizes include

4 x tickets to a Vitality Blast T20 match; Signed Southampton FC Pennant
 Tickets to watch Eastleigh FC; Air B&B stays
 Retail and Pamper Vouchers

Money raised by the raffle
will go to five local charities:

Botley School PTA (FOBS); Alphabets PreSchool;
 The Market Hall Trust; Botley NeighbourCare
 All Saints' Botley PCC (Roof Fund)

For more information call 01489 787181

Tickets COST £1.00

Available in advance from the Parish Council office at
 the Botley Centre, Harvey's Café in Botley Square
 and direct from five local charities.
 Also available for purchase on the day from our
 dedicated raffle stall.



Parish Council Meetings

The Council's meetings take place twice a month at the Botley Centre.
 The meetings are open to the public.

On the second Tuesday—**6:30pm Planning & Highways Committee** followed by a **Parish Council meeting at 7:15pm**.
 On the fourth Tuesday—**6:30pm Planning & Highways Committee**, followed at 7:30pm by either the **Recreation Committee or the Policy & Resources Committee**.

See www.botley.com and Parish Council notice boards for dates and agenda details.

Parish Councillors

Councillor	Address	Telephone	e-mail
Colin Mercer (Chairman)	Shapwick, Brook Lane, SO30 2ER	01489 784246	Colin.mercer@botley-pc.gov.uk
Mrs Sue Grinham (Vice Chair)	8 Ravenscroft Way, SO32 2FZ	01489 781680	Sue.grinham@botley-pc.gov.uk
Jonathan Appleby	Kingfishers, Donkey Lane SO30 2BA	01489 787605	Jonathan.appleby@botley-pc.gov.uk
Mrs Lisa Congdon	8 Oatlands Road, SO32 2DE	07876 886018	Lisa.congdon@botley-pc.gov.uk
Chris Cooper	45 High Street, SO30 2EA	07967 275469	Chris.cooper@botley-pc.gov.uk
Roger Hann	9 Crows Nest Lane, SO32 2DD	01489 795299	Roger.hann@botley-pc.gov.uk
Hayley King	20 Downland Close SO30 2SG	07901795827	Hayley.king@botley-pc.gov.uk
David Kinloch	26 Kingsman Drive, SO32 2FW	07875 232557	Dave.kinloch@botley-pc.gov.uk
Rupert Kyrle	6 Sherwood Ave, SO30 0JY	02380 407045	Rupert.kyrle@botley-pc.gov.uk
Adrian Trace	Maddoxford Farm, Maddoxford Lane	01489 787181	Adrian.trace@botley-pc.gov.uk
Stephen Wildin	36 Tickner Close, SO30 2DW	01489 799650	Stephen.wildin@botley-pc.gov.uk

Clerk to the Parish Council

Mrs Janet Morgan, Botley Parish Council, The Botley Centre, High Street, Botley, SO30 2ES
 Telephone: 01489 787181 e-mail: parish.clerk@botley-pc.gov.uk